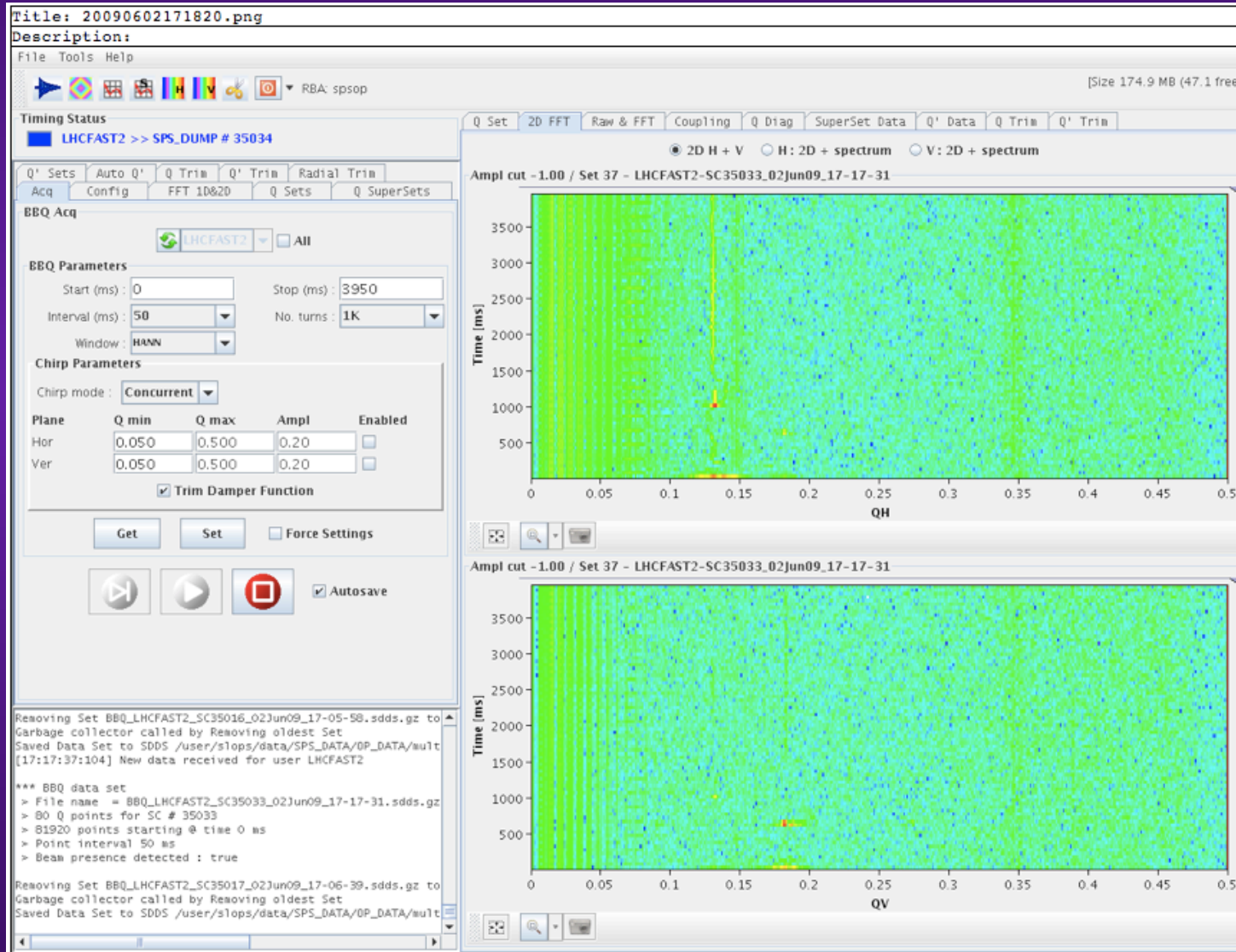


Controlled Transverse Emittance BU (1/7) (02/06/09)

- ◆ **Remote Desktop:** abpc11659. **User = damper and password = Blowup09**
- ◆ **My Computer / C / _Blowup / Horizontal or Vertical**
- ◆ **Let choose Vertical => Click on WaveGen to launch the application**
- ◆ **This year the maximum is 0.3 V (i.e. we have more gain)**
- ◆ **I made some meas., revealing that it works (see elogbook)**

Controlled Transverse Emittance BU (2/7) (02/06/09)

- I put the same octupoles as last year and excitation 0.05 V in H and 0.3 in V), with the same timings as last year

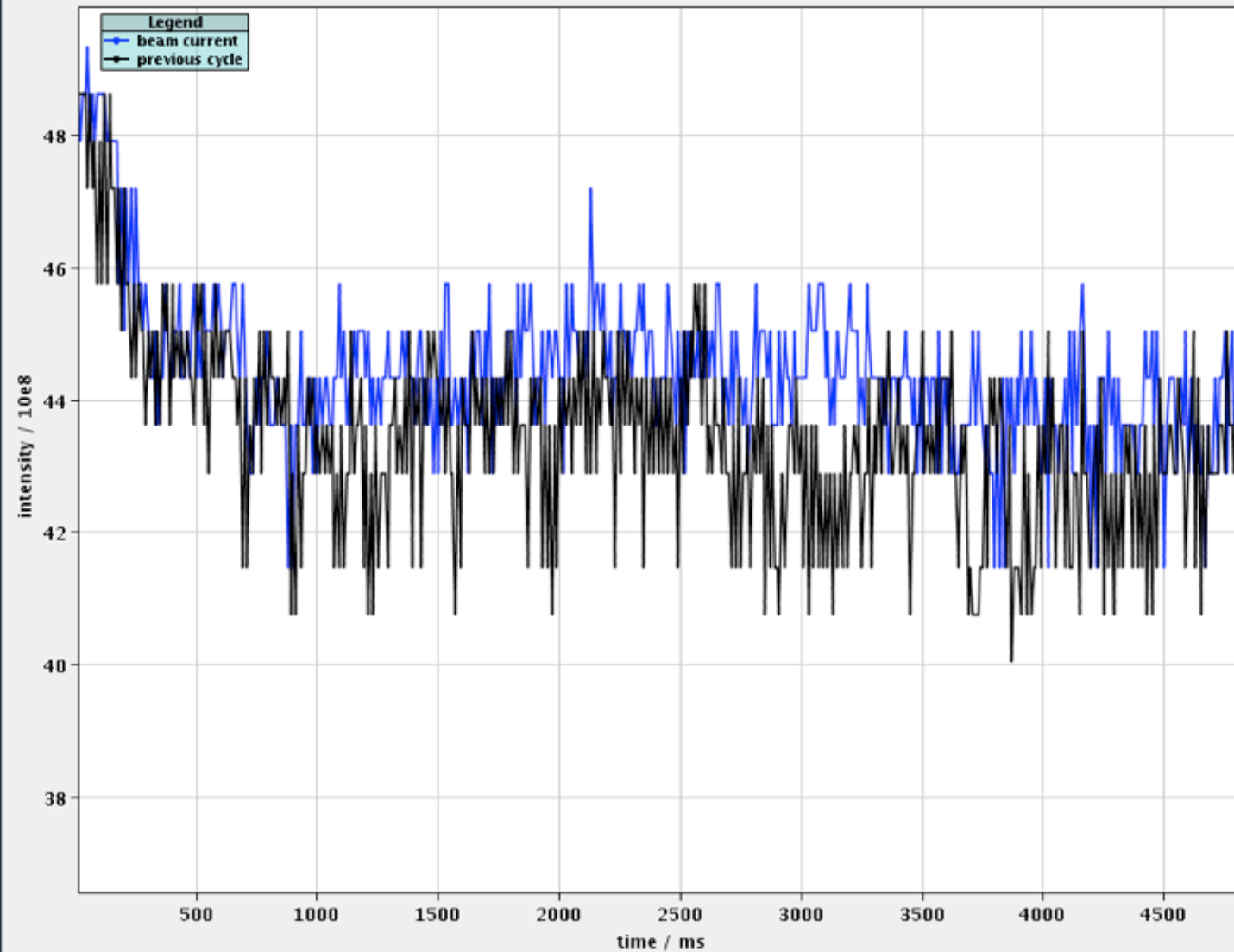


Controlled Transverse Emittance BU (3/7) (02/06/09)

Title: 20090602171949.png

Description:

Acq. Time: 2009/06/02 17:19:34 User: SPS.USER.LHCFAST2 SC: 35036 #Acquisitions: 482 sampling time: 10ms



Cycles

- SFT_LONG_2009_V1
- CNGS_2009_AFTER_FT_V1
- LHCFAST_2009_V1
- _NON_MULTIPLEXED_SPS
- LHCFAST_2009_V2

Show hidden

User selection: SPS.USER.LHCFAST2

Resident Users

SPS.USER.LHCFAST2

Autosave OFF

BCT device

BDCTLOW4

Acquisition in COAST

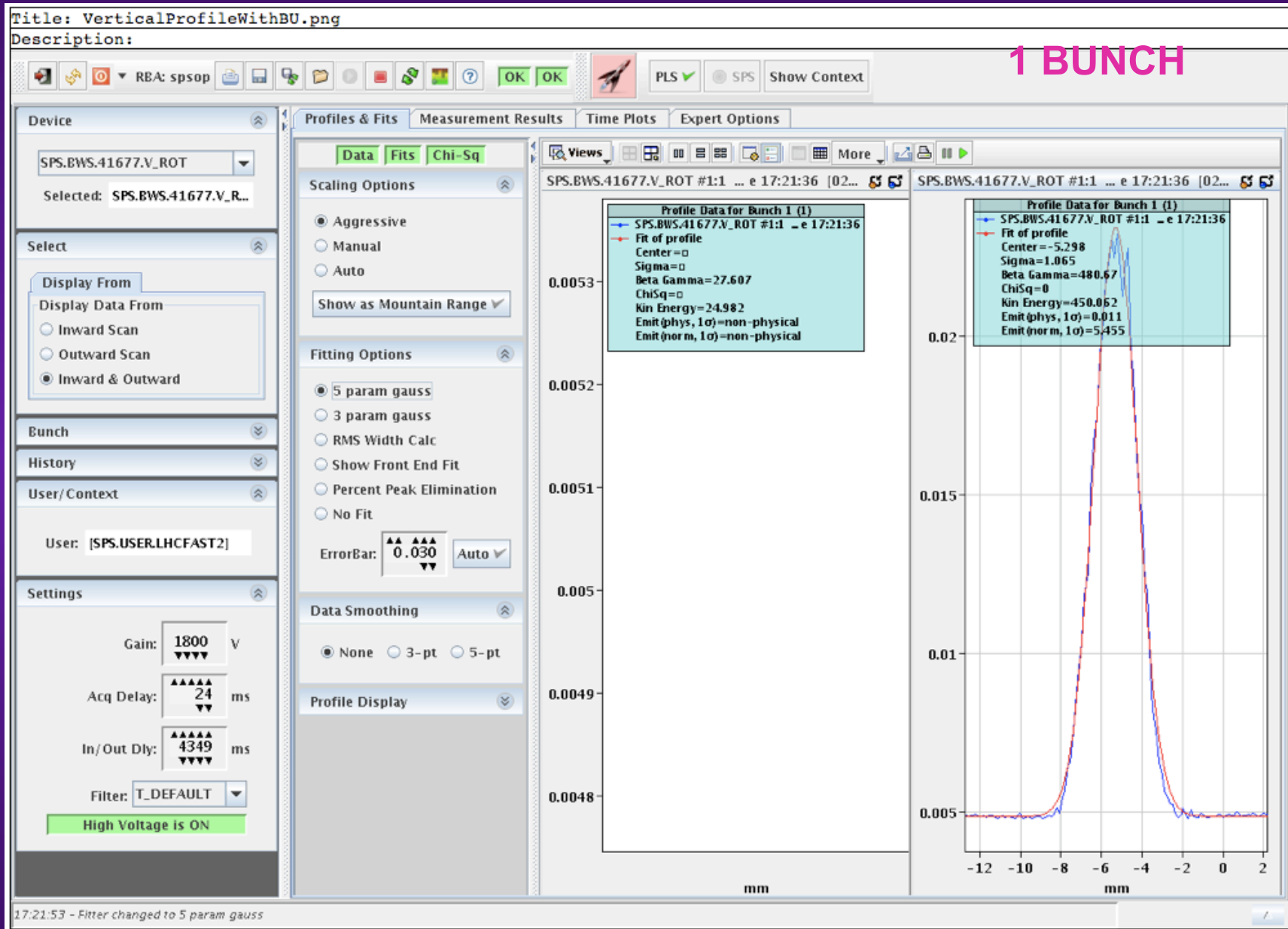
Show previous cycle

Show reference

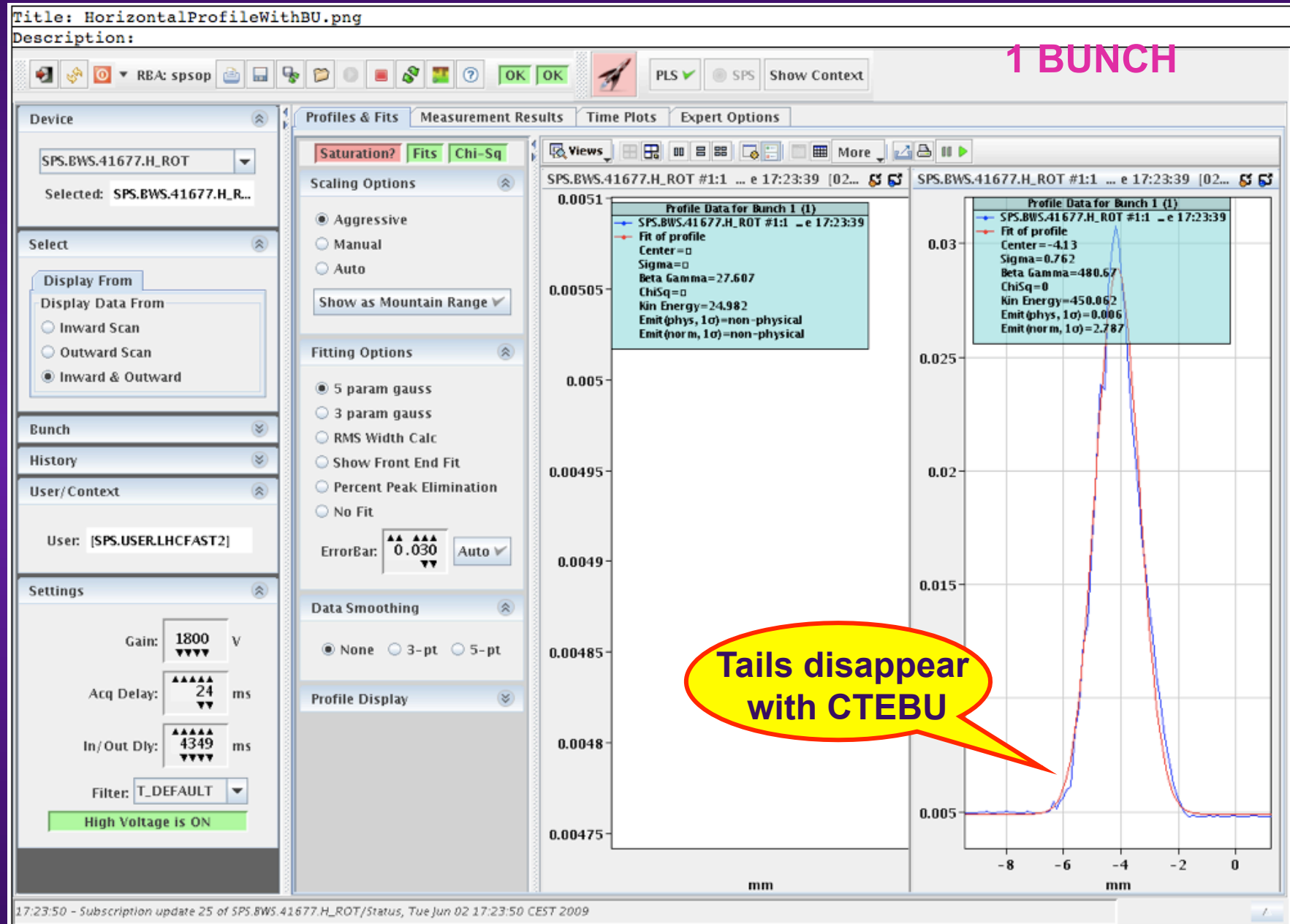
Acquisition > Reference



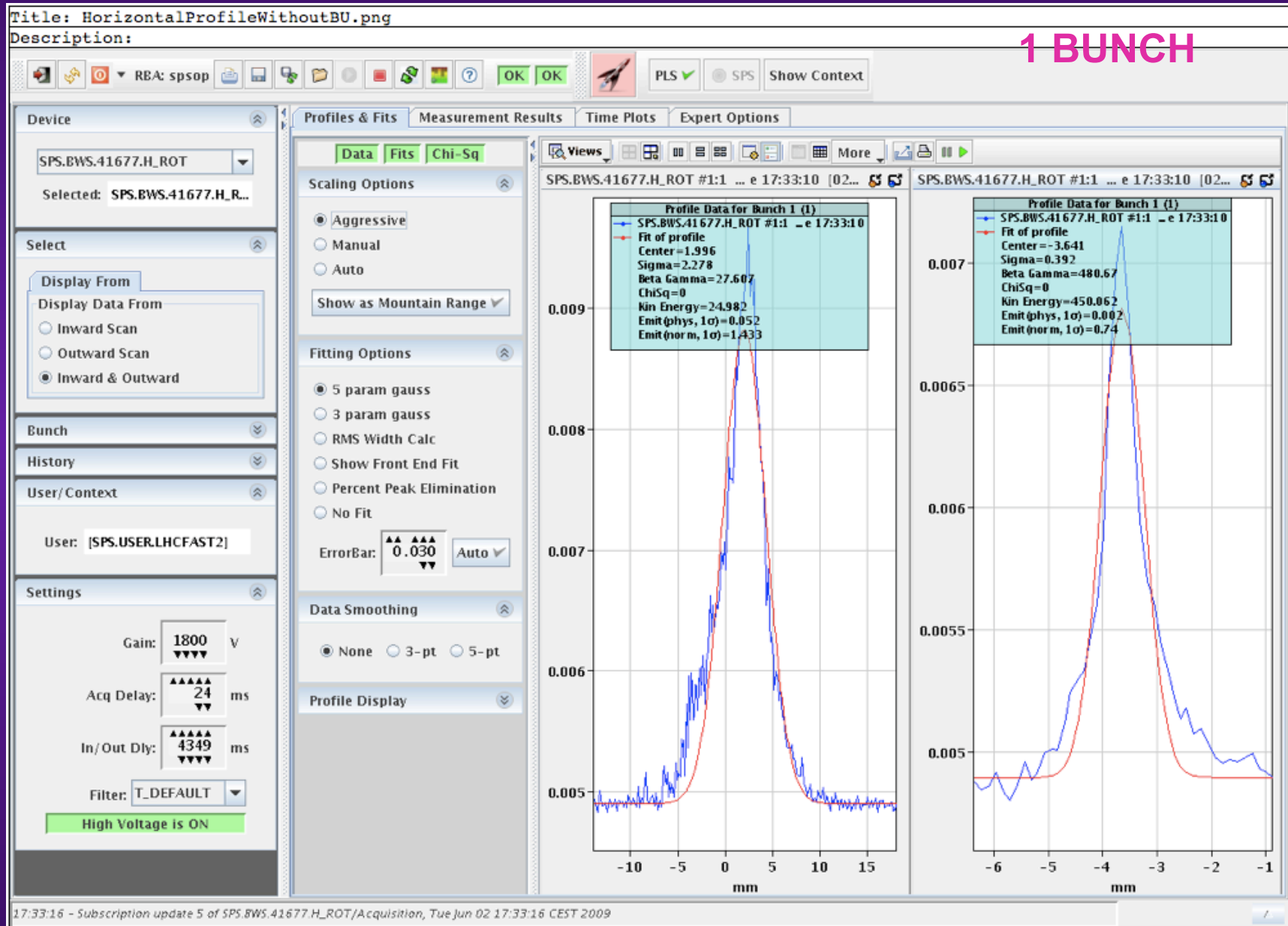
Controlled Transverse Emittance BU (4/7) (02/06/09)



Controlled Transverse Emittance BU (5/7) (02/06/09)



Controlled Transverse Emittance BU (6/7) (02/06/09)



Controlled Transverse Emittance BU (7/7) (02/06/09)

