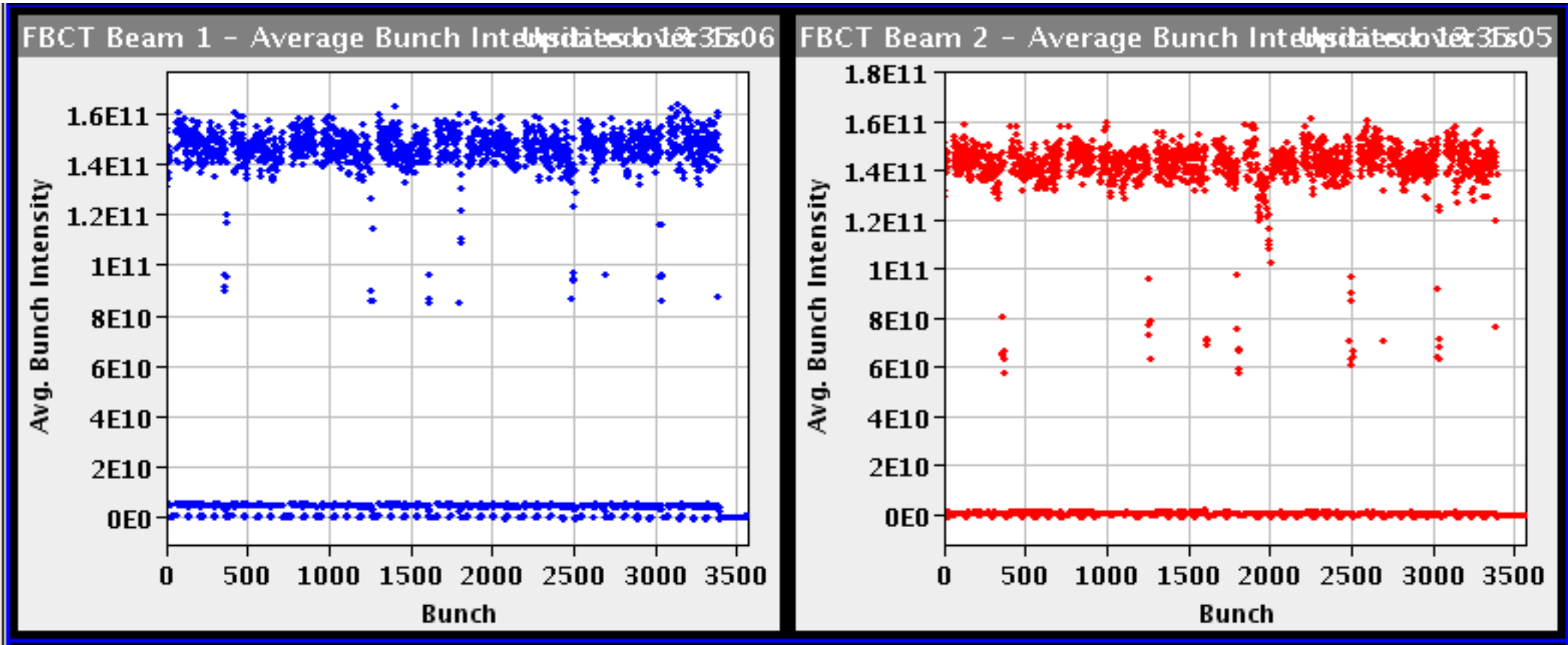


Snowflake

Fill ...,2634,2635,2644, 2646, 2662, 2691, 2692

Change of filling scheme

Fill 2691

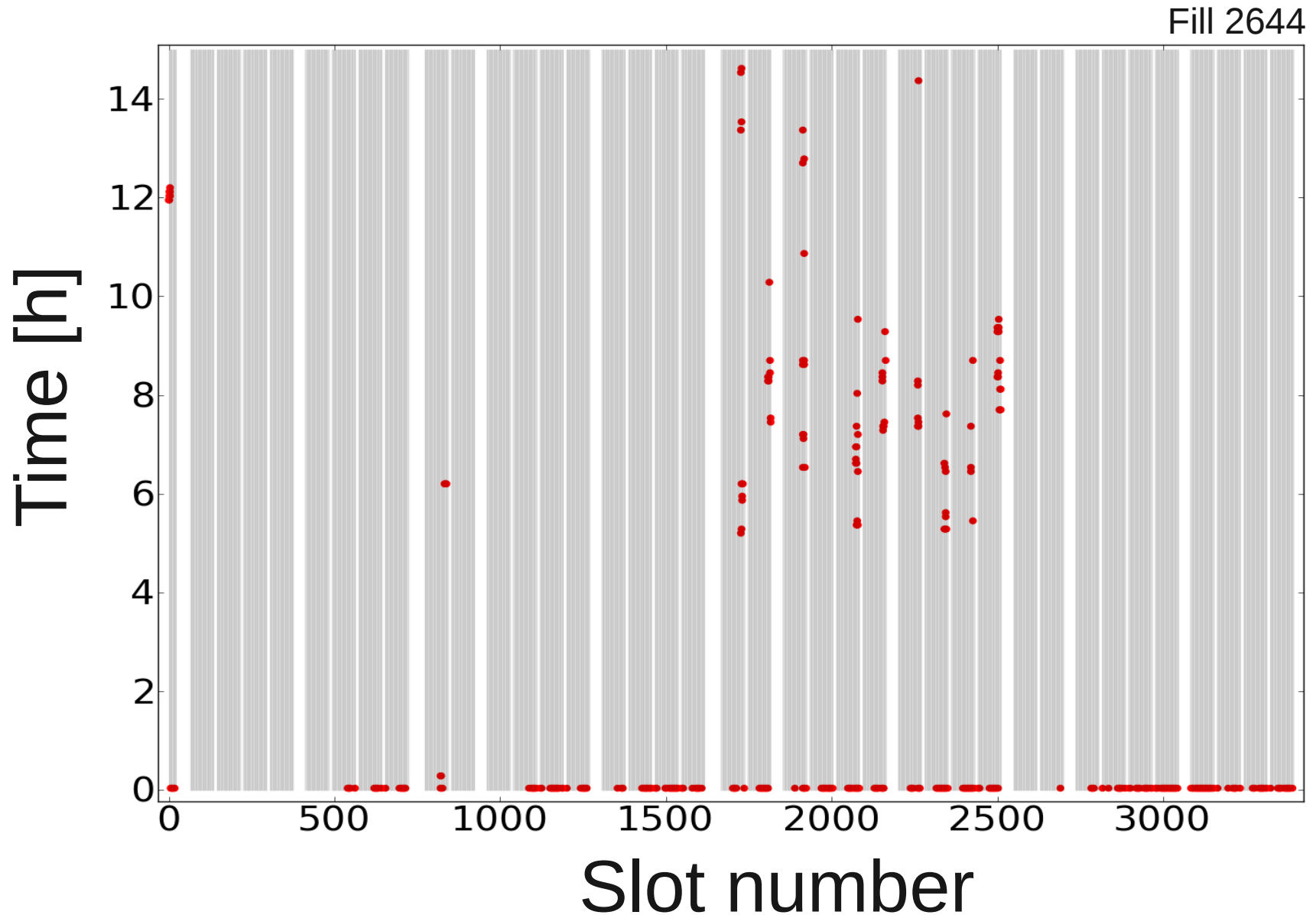


Snowflake

Fill 2634,2635,2644,2646

Concern **only IP8 private bunches**

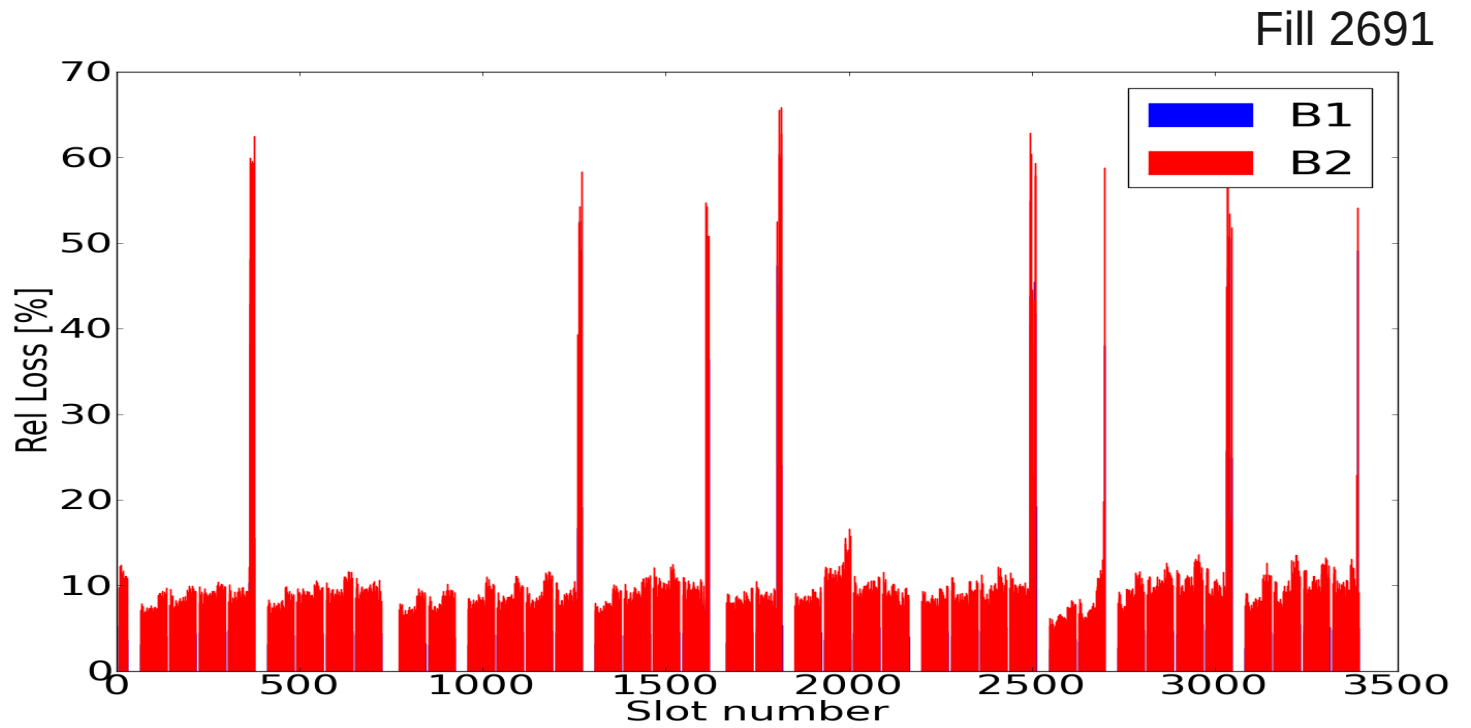
Cured by removing them, experiments want them back



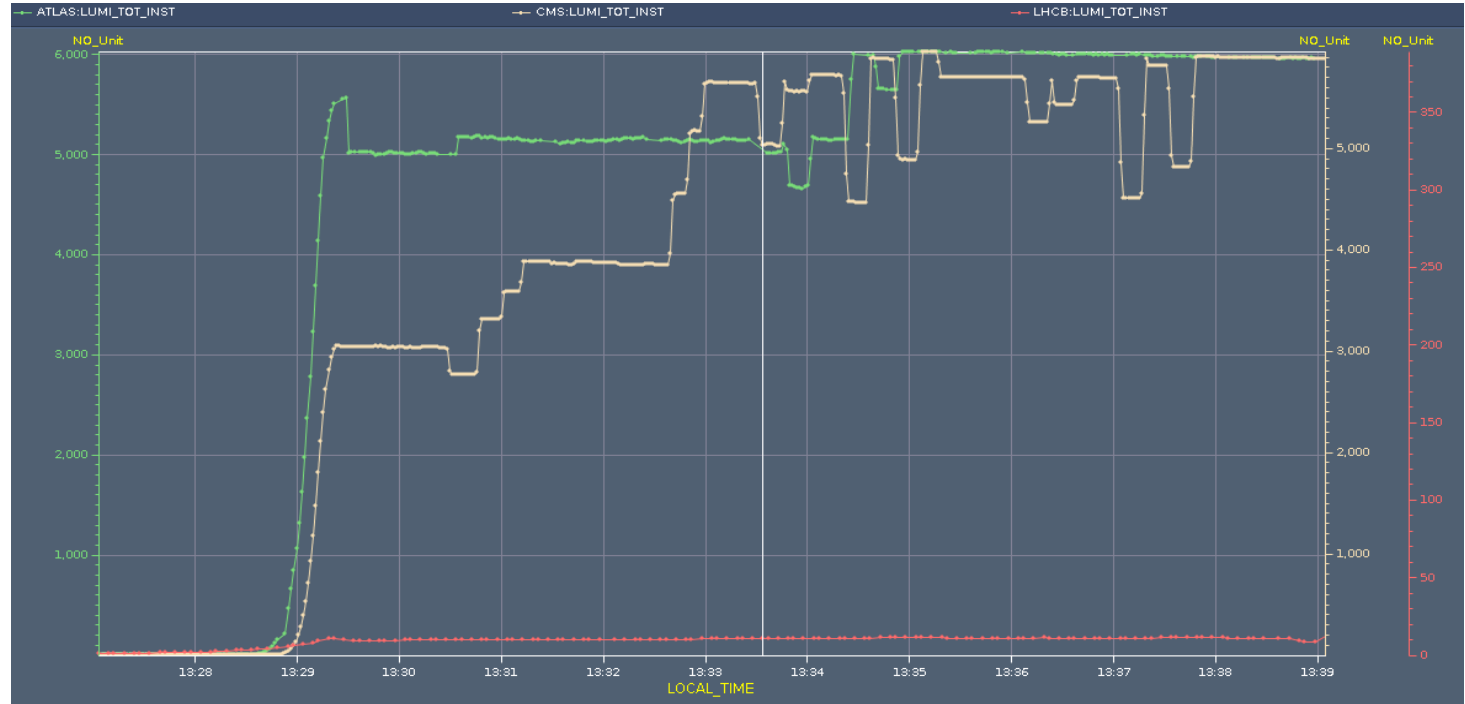
Snowflake

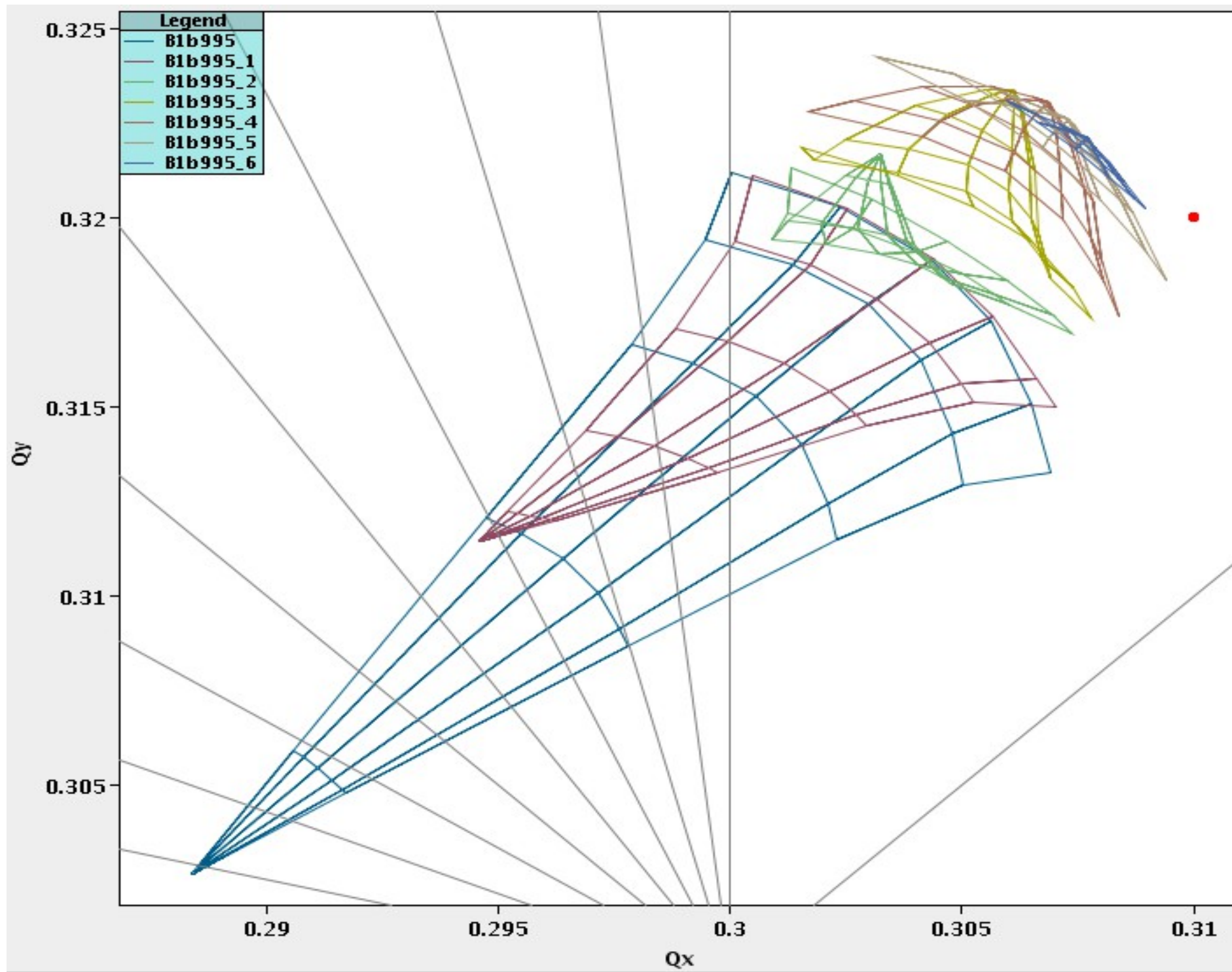
Fill 2662,2691

End of trains are getting unstable



Lumi indicates an offset
→ tune spread similar to
IP8 private bunches

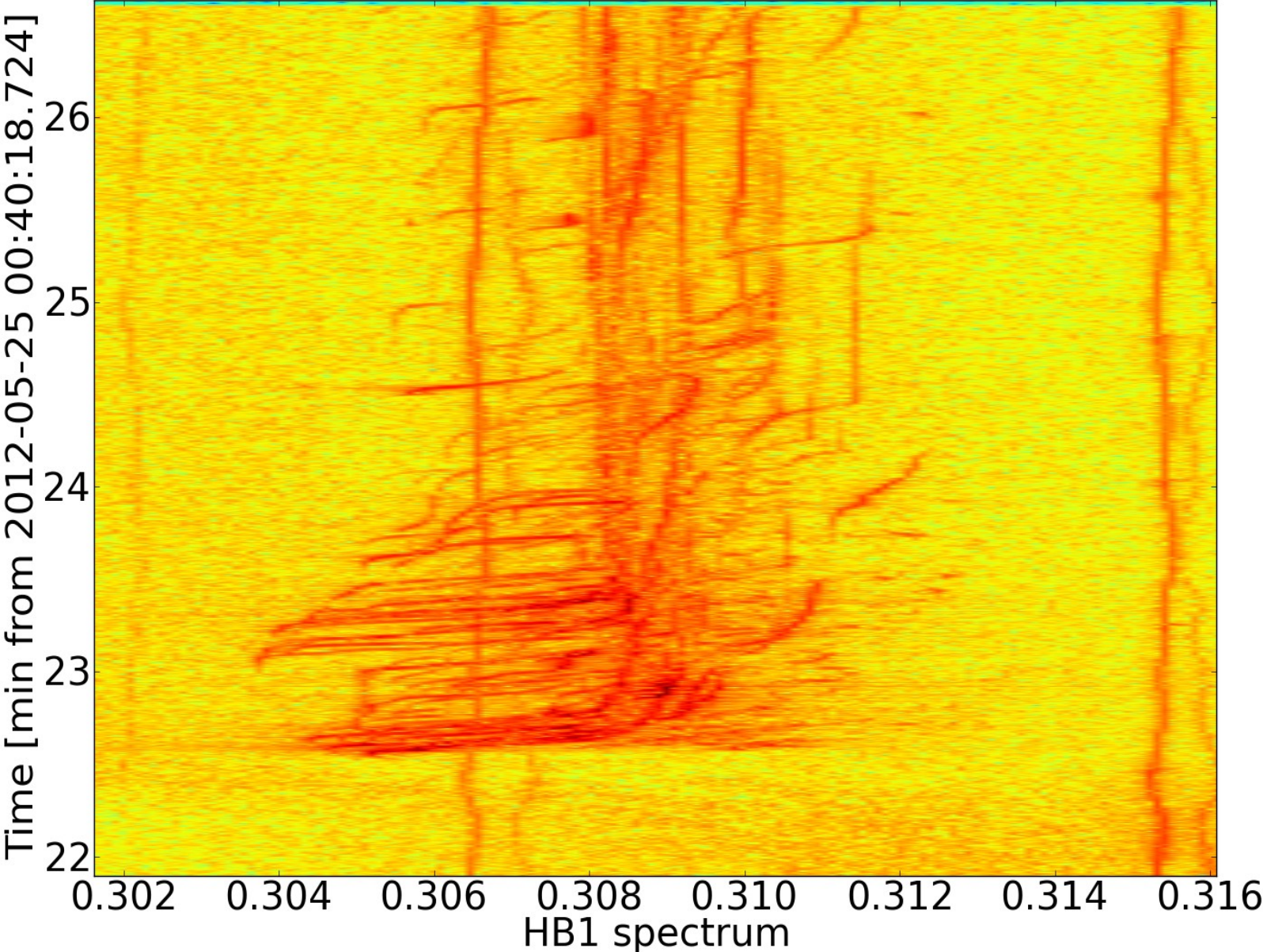




Snowflake

Typical spectrum

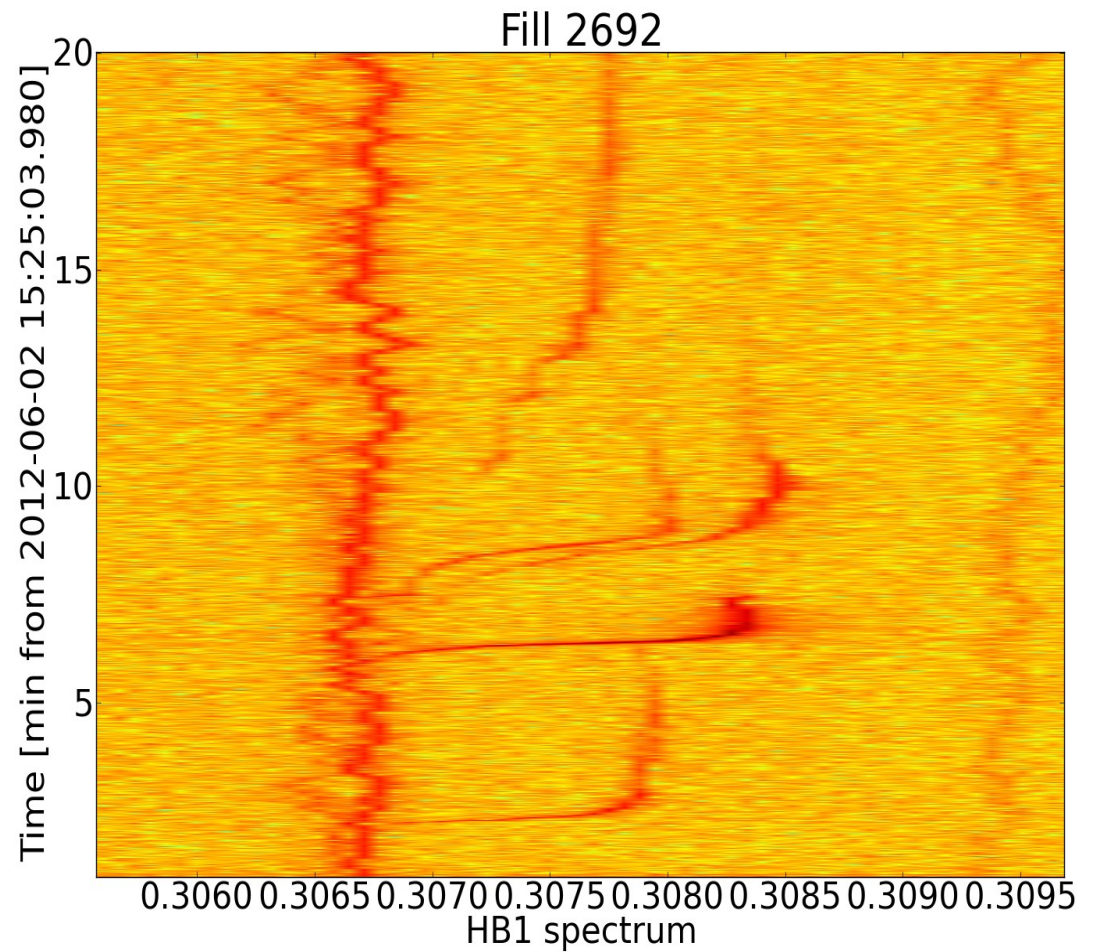
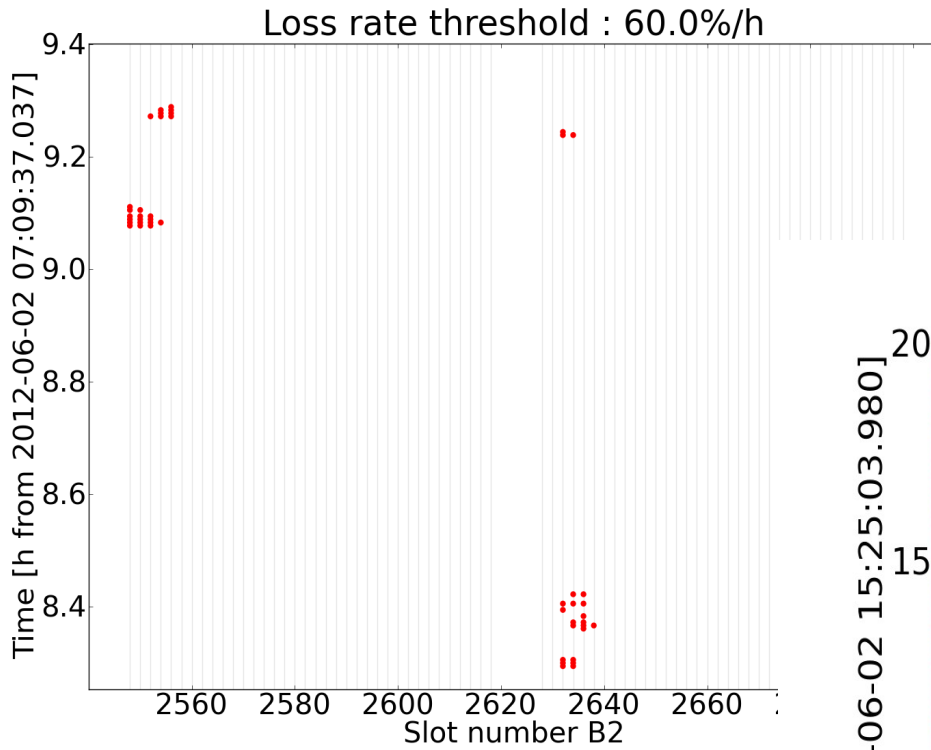
Fill 2662



Snowflake

Fill 2692

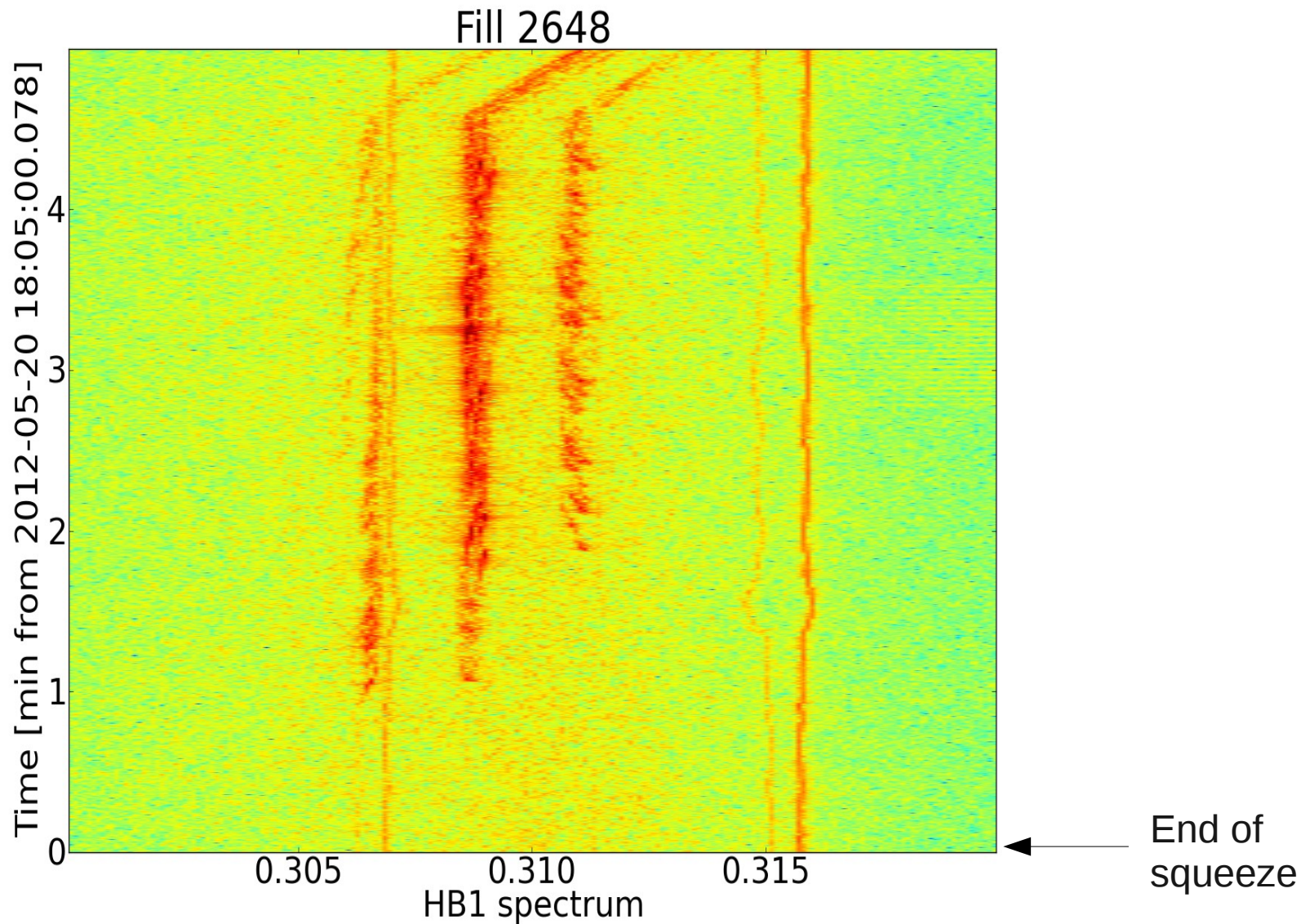
Bunches colliding in only IP1 and 5 in both beams

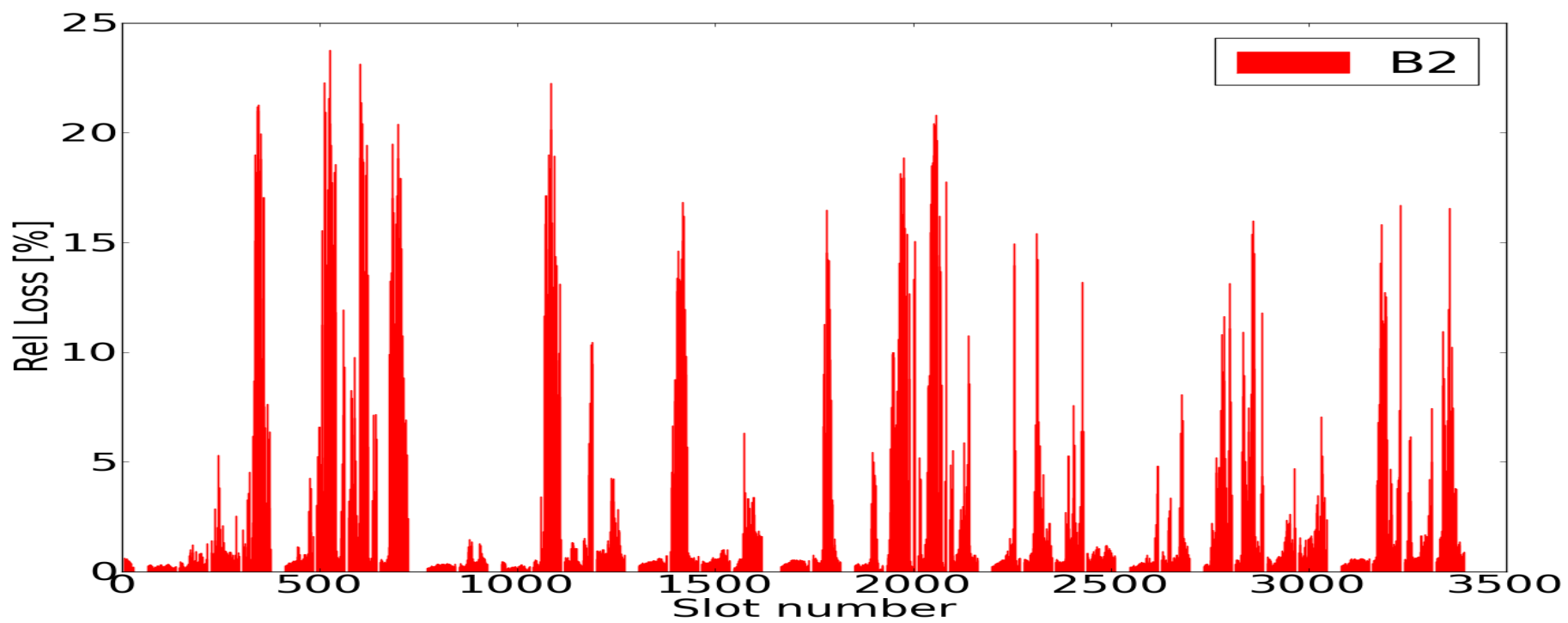
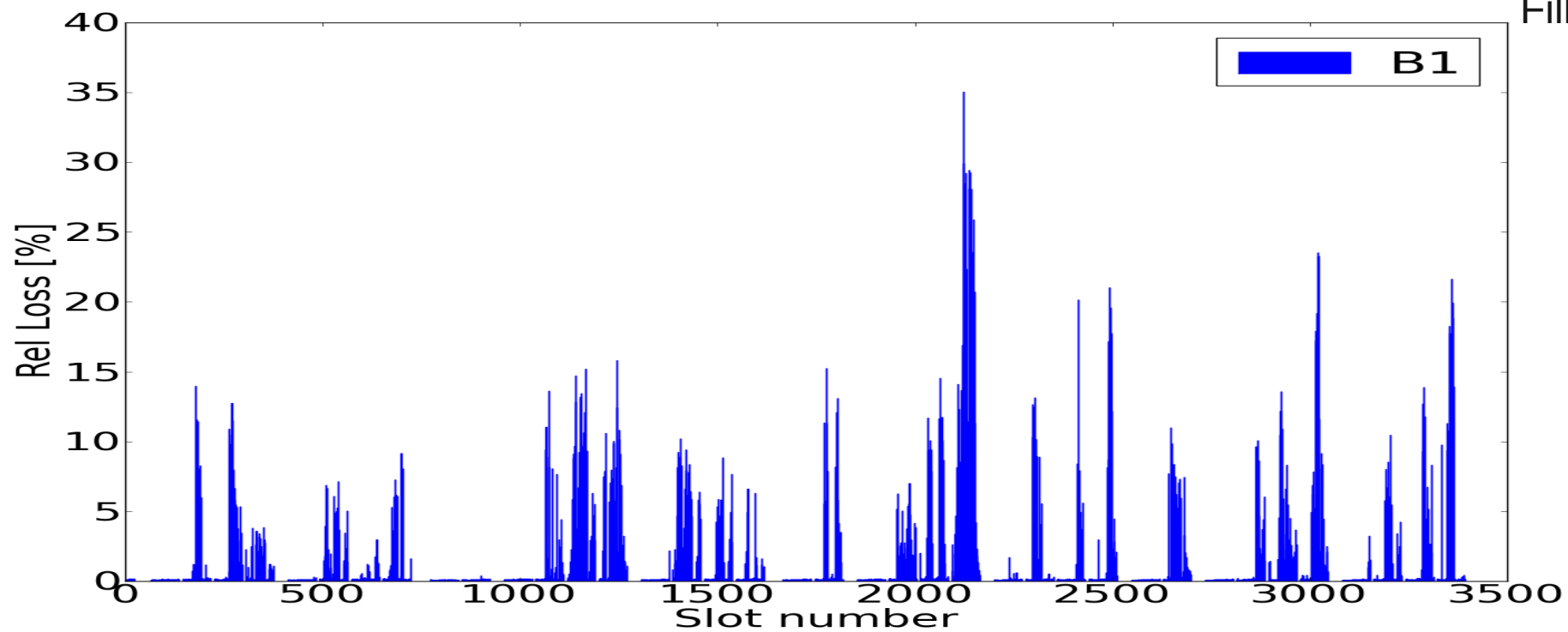


End of squeeze

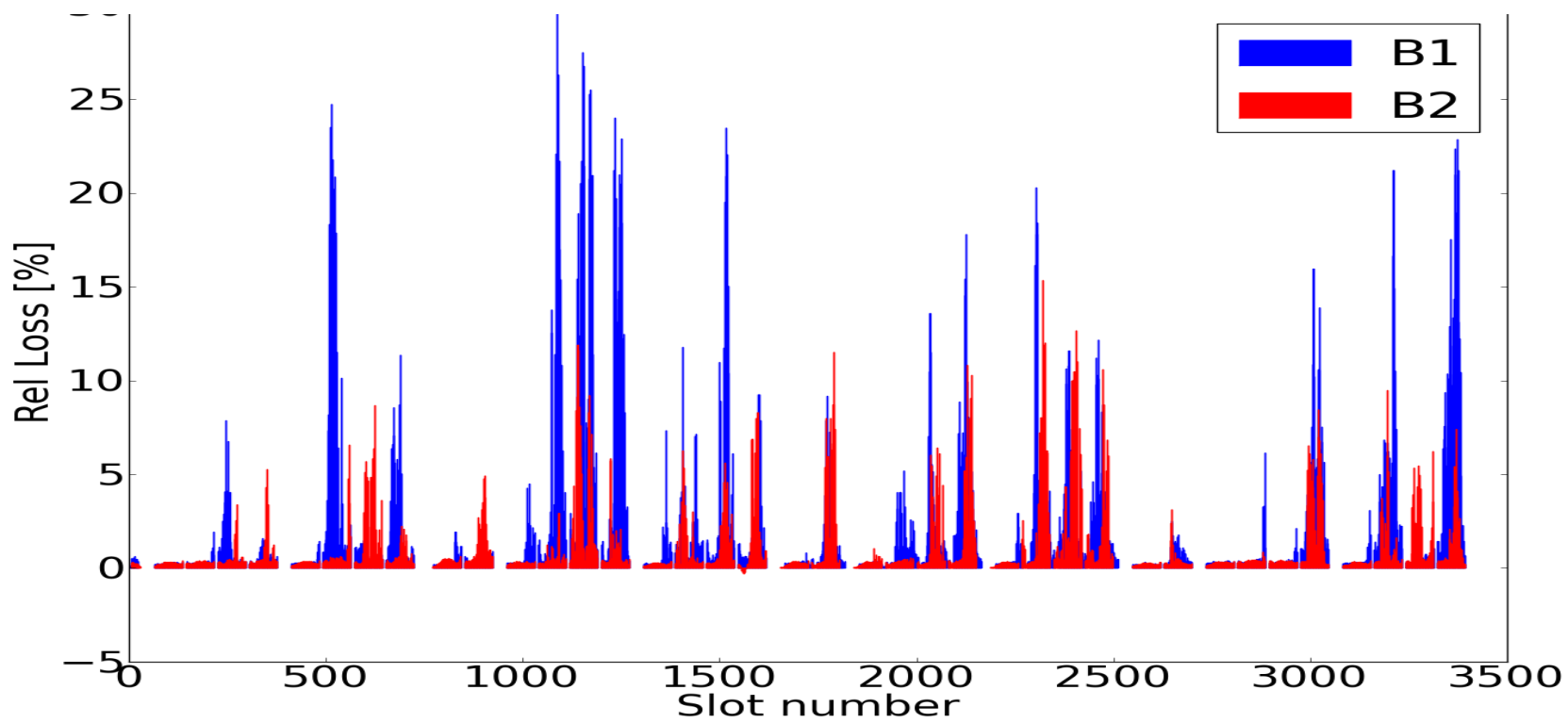
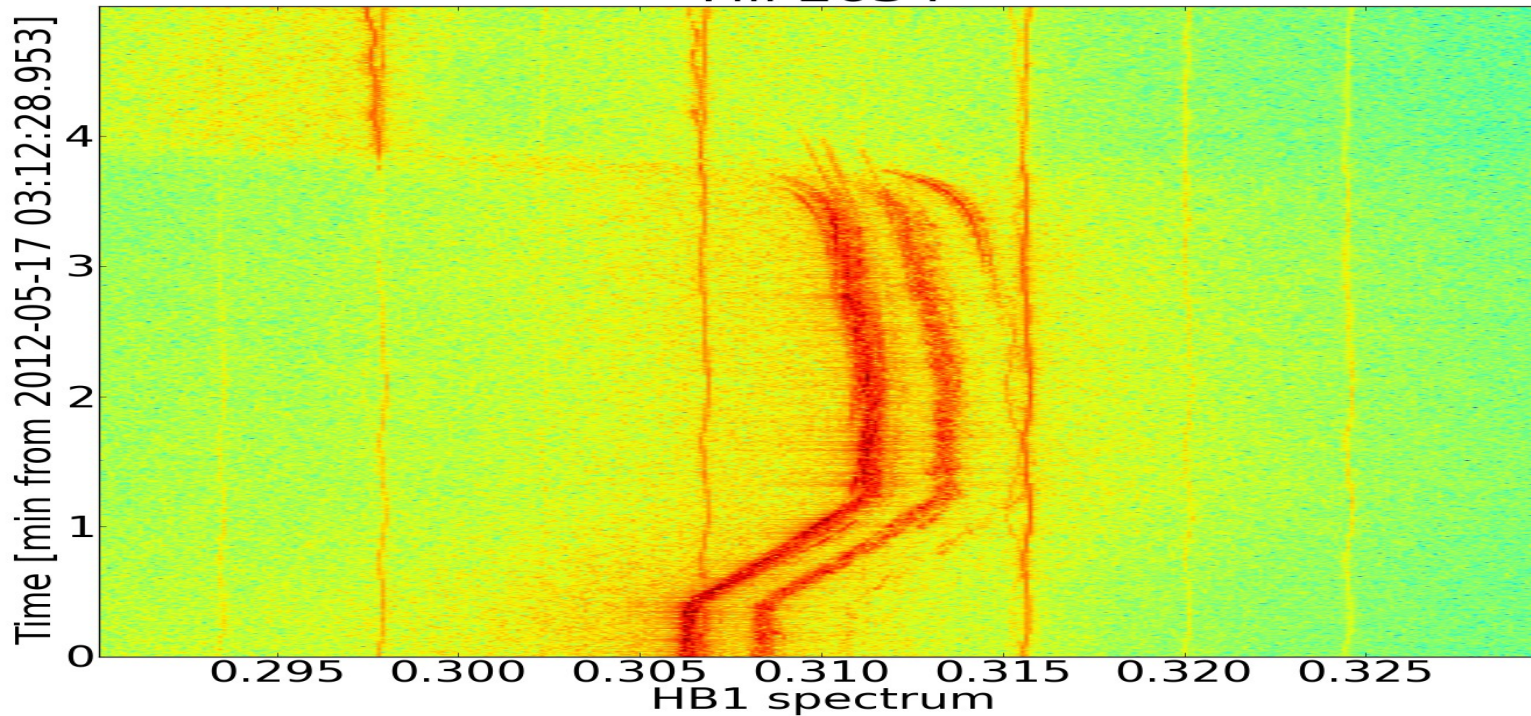
Fill 2634,2635,2648,2657,2668,2676

2 or 3 lines separated by $\sim Q_s$ visible from end of squeeze to collision

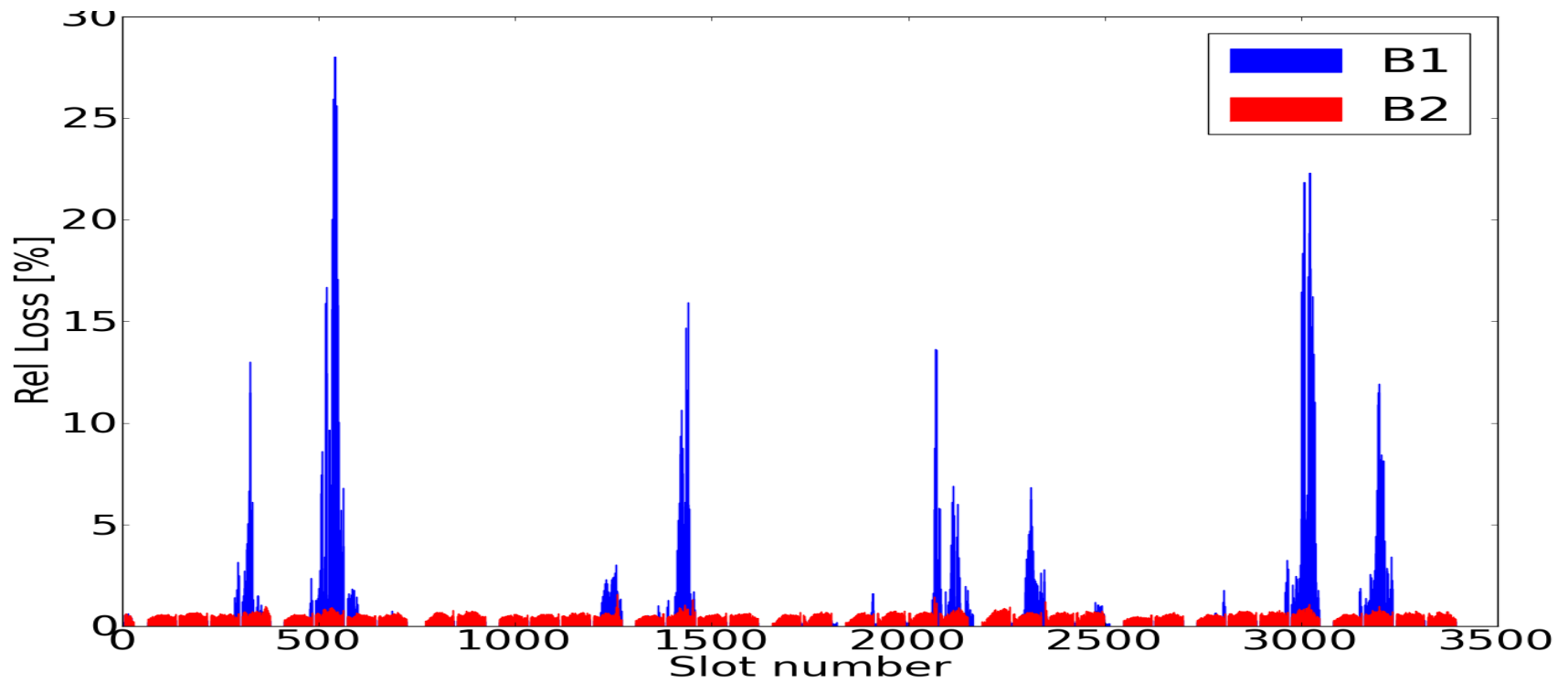
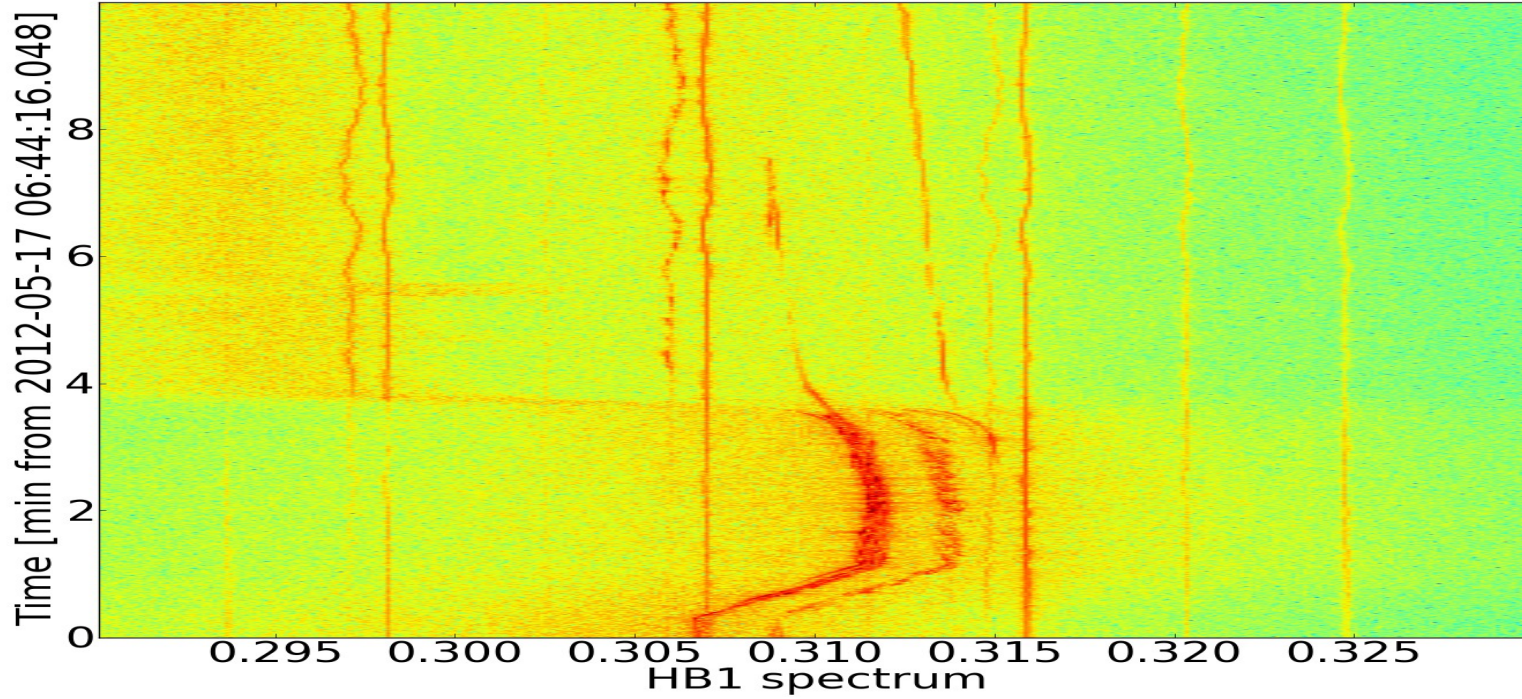




Fill 2634



Fill 2635



Fill 2657

