

KEY TO SYMBOLS

- Landing point for vacuum chamber
- Landing point for vacuum chamber
- Short without fixation
- Short with fixation
- Long without fixation
- Long with fixation
- Insulated girth displacement joint (shortened longer on side carrying pointer)
- Vacuum chamber support
- Support (Attaching to face along the beam)
- Support insulated electricity from vacuum chamber
- Maximum offset in flexible element

NOTES

- 1. Displacement of special elements
- 2. In horizontal displacement
- 3. In vertical displacement
- 4. Initial position (fixed displacement)
- 5. After running-in (fixed displacement)
- 6. In service (free, without displacement)
- 7. Service position in service

NOTE: VPSA, VPH, and VPM1 are insulated from vacuum chamber and external separately.

APERTURE OF THE VACUUM CHAMBER

girth

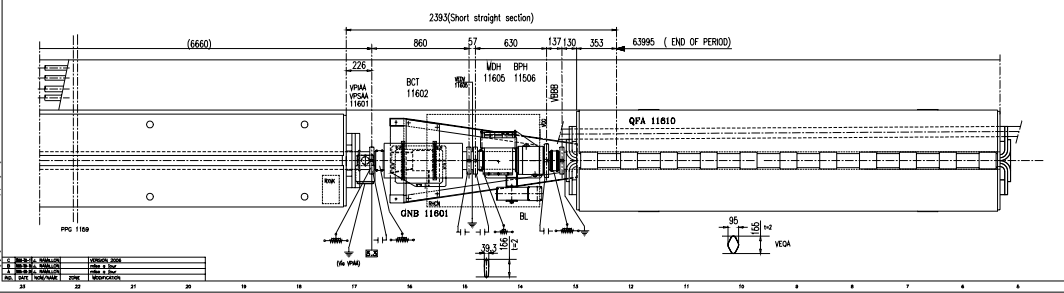
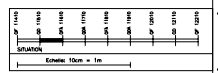
 Vacuum chamber cross section: girth
 Internal aperture dimensions under vacuum:
 External aperture dimensions under vacuum:

WBB	R06-3007-2
VDP	R04-7082-0
VPH	R04-7245-1
VBB	R04-7245-1
VPSA	R04-7247-1
VBD	R04-7072-0
VEED	R04-7072-0
VEED	R04-7072-0
VEED	R04-7072-0
VEED	R04-7072-0
VEED	R04-7072-0
VEED	R04-7072-0

Vacuum item Drawing item Notes

gpa	8012-1027-0	8014-8015-1	8014-8015-1
LMP	8017-0051-1		
B	8017-0062-1		
SPH	802-5108-0		8014-7128-0
MG	802-5108-0		8014-7128-0
GLD	8014-7042-0		8014-6000-1
MB	801-1108-1		8014-6000-1
ML	801-1208-1		8014-6000-1
OP	8012-1009-0		8014-6000-1

Machine element Drawing element Drawing support



UNIT	DESCRIPTION	QUANTITY	REVISION
1	HAZOP	1	1
2	DESIGN	1	1
3	CHECKING	1	1
4	DRAWING	1	1
5	PRODUCTION	1	1
6	CONSTRUCTION	1	1

HAZOP REPORT NO. 11810 QPA 11810
 QPA 11810
 QPA 11810
 QPA 11810
 QPA 11810
 QPA 11810
 QPA 11810

DESIGNER: [Name] CHECKER: [Name] DRAWN: [Name] DATE: [Date]

PROJECT: ...
 DRAWING NO.: ...
 DATE: ...
 SCALE: ...
 UNIT: ...