

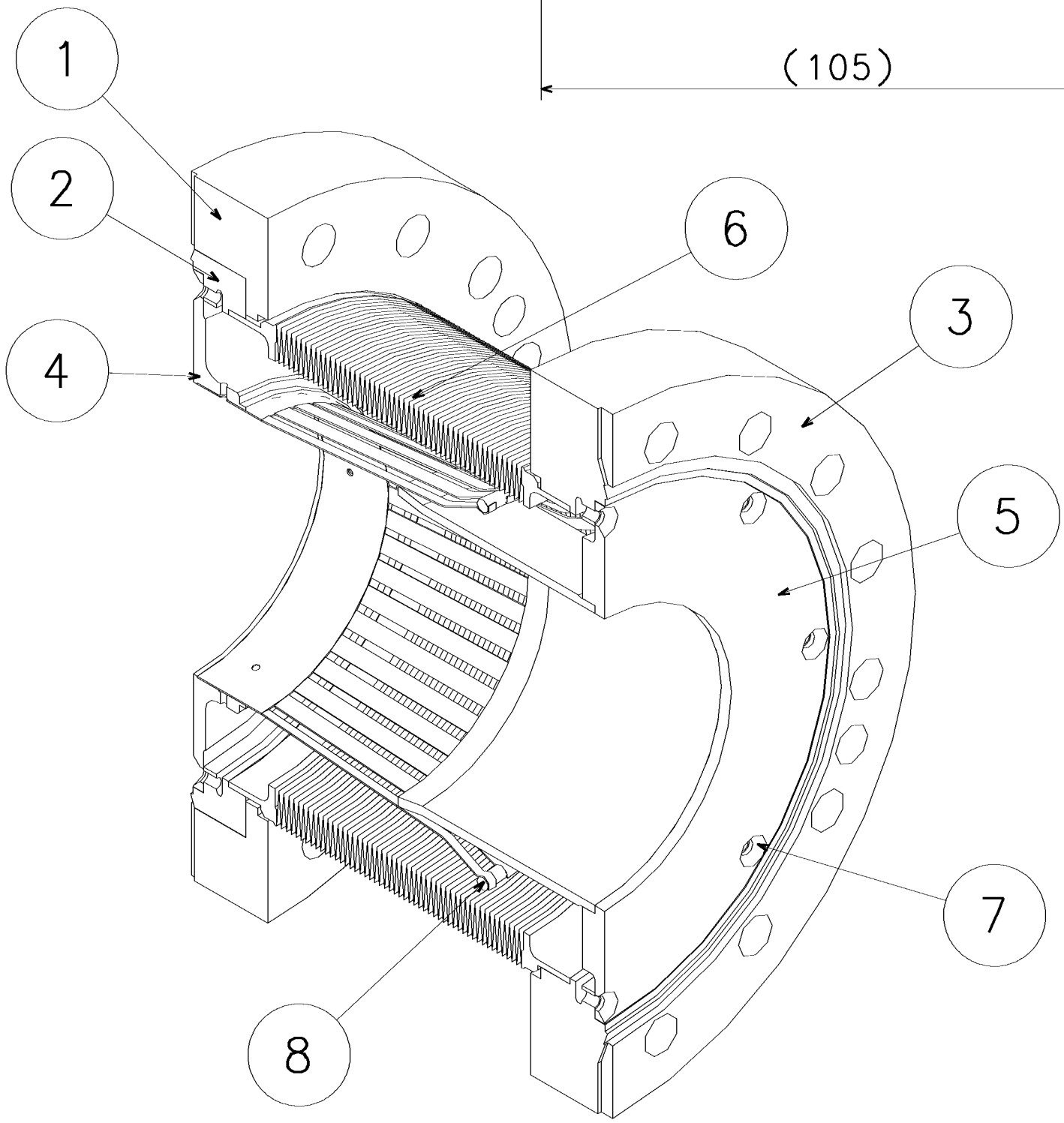
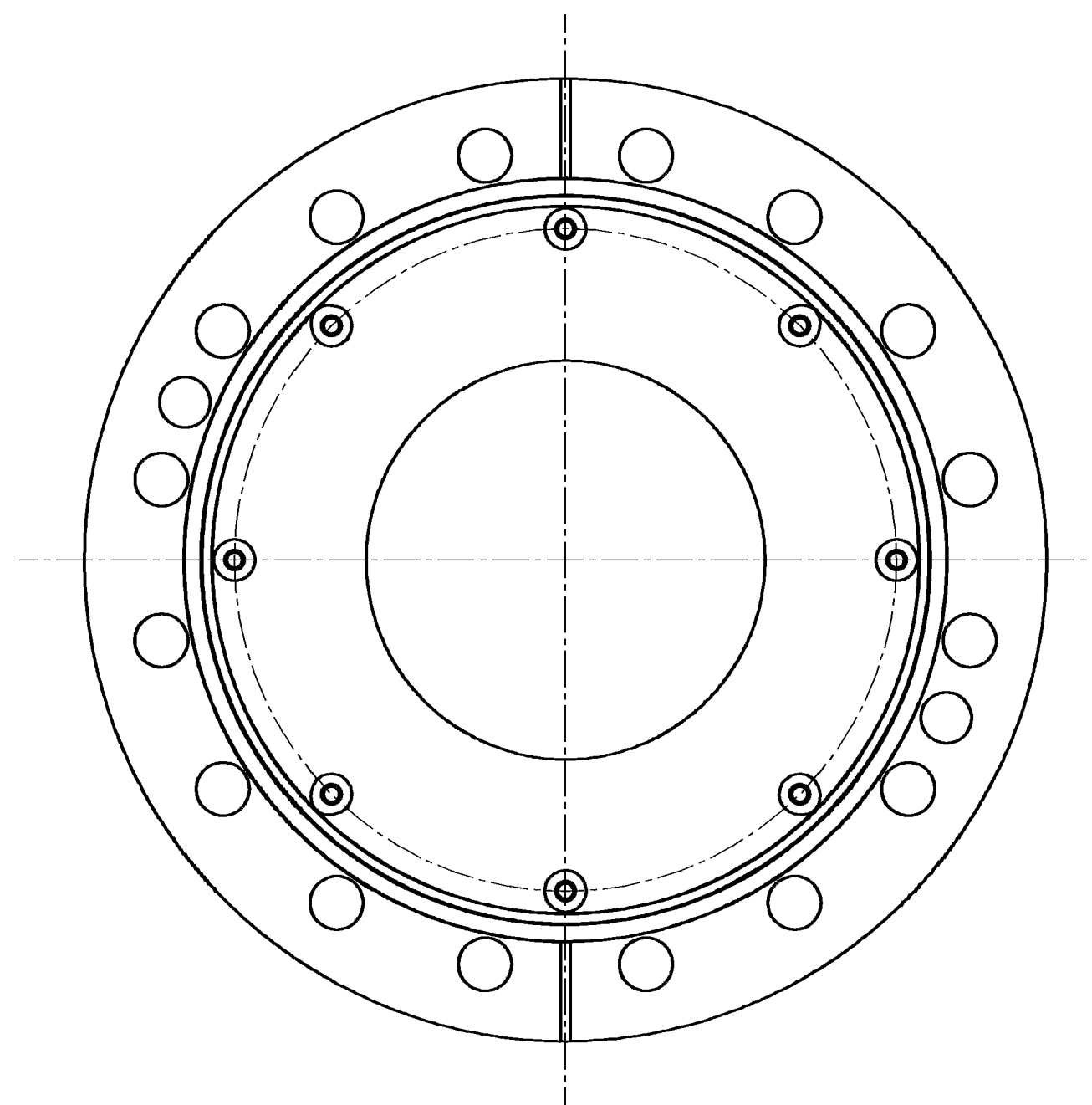
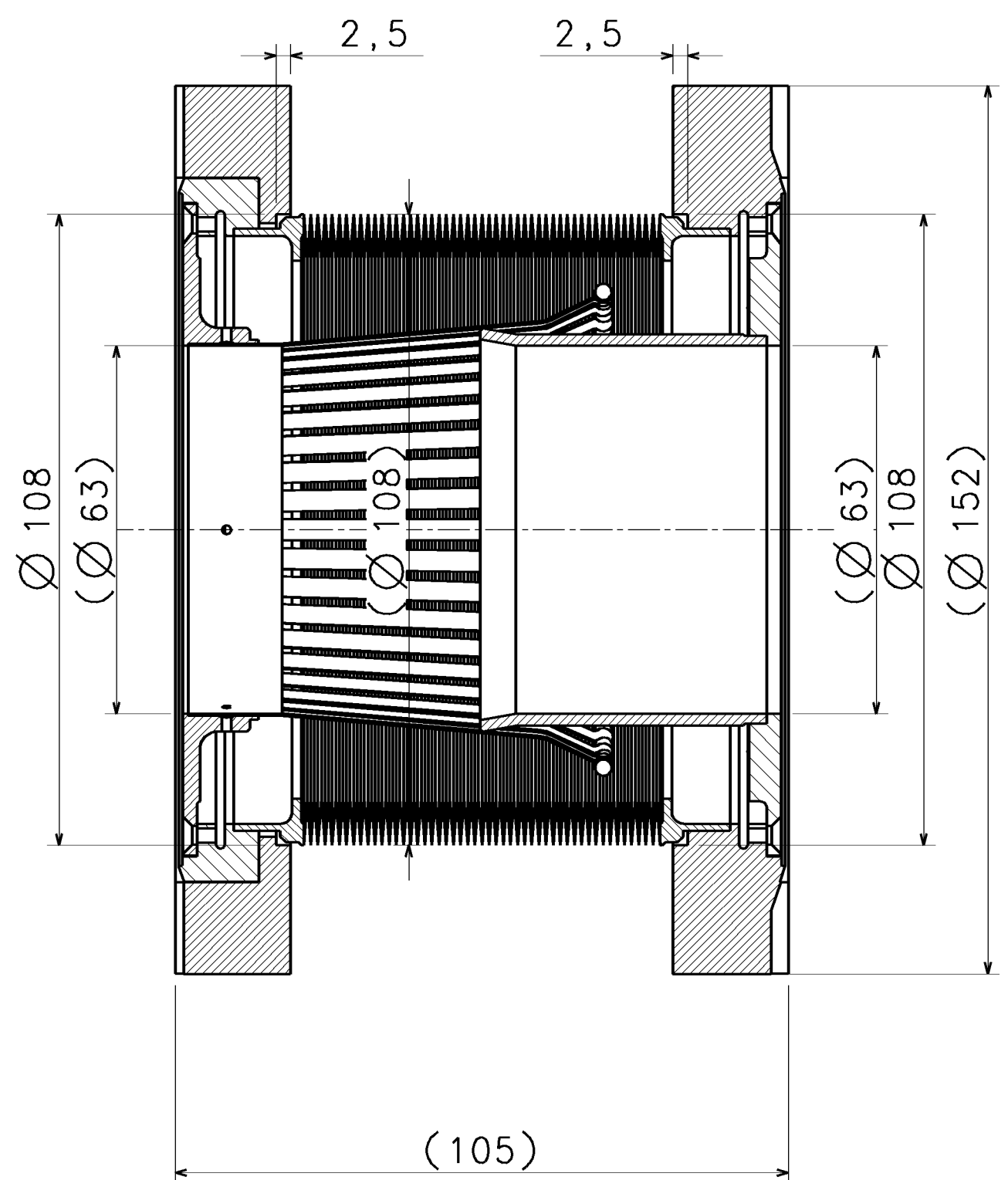
ORGANISATION EUROPÉENNE POUR LA RECHERCHE NUCLÉAIRE - CERN
 EUROPEAN ORGANIZATION FOR NUCLEAR RESEARCH - GENEVE

DESSIN, RUGOSITÉ, TOLÉRANCES SELON NORME ISO
 DRAWING, RUGOSITY, TOLERANCES ACCORDING TO ISO STANDARD

PROJECTION

ORGANISATION EUROPÉENNE POUR LA RECHERCHE NUCLÉAIRE - CERN
 EUROPEAN ORGANIZATION FOR NUCLEAR RESEARCH - GENEVE

Le dessin ne peut être utilisé à des fins commerciales sans autorisation écrite.
 This drawing may not be used for commercial purposes without written authorisation.



WELDING SPECIFICATIONS:

- THE WELDS MUST BE EXECUTED BY TIG WELDING
- * WITHOUT FILLER MATERIAL
- * UNDER ARGON SHIELDING
- * WITH 100% PENETRATION

- LEAK TESTING REQUIREMENTS FOR ULTRA HIGH VACUUM COMPONENTS:
- * CLEANING OF THE COMPONENTS BEFORE THE LEAK TEST:
 THE COMPONENT SHALL BE CLEANED IN ACCORDANCE WITH TECHNICAL NOTE 3DPS-ML TR-01.
- * FOLLOWING PRESSURE TESTING AND FINAL CLEANING, THE COMPONENT SHALL BE LEAK TESTED AT ROOM TEMPERATURE WITH A SENSITIVITY $\leq 10^{-10} \text{Pa} \cdot \text{m}^3/\text{s}$ USING A CALIBRATED LEAK DETECTOR THE LEAK DETECTOR SHALL NOT SHOW ANY DEVIATION WHEN THE COMPONENT IS ENCLOSED IN A HELIUM FILLED ENVELOPE

1	TENSION SPRING FOR $\varnothing 63$ -	8		LHCVSR__0041	
16	Hex countersunk screw M3x6	7	A4 Ag coated	Bossard BN4719	
1	WELDED BELLOW - BETWEEN TAS & BPM	6		LHCVBX__0013	
1	TRANS. TUBE FLANGE- $\varnothing 63$ L 51.5	5		LHCVBX__0012	
1	RF CONTACT $\varnothing 63$ -	4		LHCVSR__0025	
1	FLANGE DN100/103 - FOR WARM MODUL	3		LHCVBU__0018	
1	ROTATABLE FLANGE DN100/103 - FOR	2		LHCVBU__0013	
1	UHV FLANGE_ROTATABLE 152/100 SCRM BRIDE UHV_ROTATIVE 152/100 SCRM 1	1		STDVUFUHV0010-pos2	
QUANT	DESCRIPTION	POS	MAT.	OBSERVATIONS	REF.CERN
	ENS./ASS.		S.ENS/S.ASS.		
Vacuum - Bellows - Experiments				ECHELLE SCALE	DES/DRA.
WELDED BELLOW BESIDE BPMSW				1:1	G. FOFFANO
					2005-12-12
					C. MENOT
					2006-04-25
					R. VENESS
					2006-04-25
					-
					-
					CMS_VAC,VACUUM_CHAMBER2,CMS2,CMS226/PL
					REPLACE/REPLACES
RELEASED BY	FOR INFORMATION	GAC	LHCVBX__0010		SIZE
PROJECT ENGINEER		B			IND.
					2

IND.	DATE	NOM/NAME	ZONE	MODIFICATION